



Marhamchurch C of E Primary School – Where My Wellies Take Me

Class 1 Summer Term

What should I know already?

Reception children will be able to comment and ask questions about aspects of their familiar world such as the place where they live or the natural world. They will be able to talk about some of the things they have observed such as plants, animals, natural and found objects.

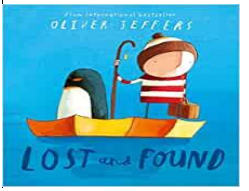
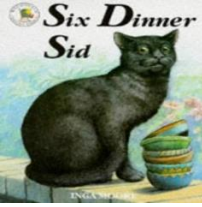
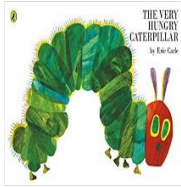
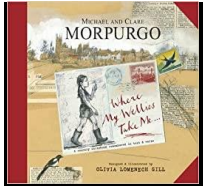
Year 1 children will know about similarities and differences in relation to places, objects, materials and living things. They will talk about the features of their own immediate environment and how environments might vary from one another.

Key Vocabulary

village	A small group of houses, perhaps with a few shops, that are often in the countryside. Marhamchurch is a village .
cliff	A steep rock face, especially at the edge of the sea.
coast	The part of the land adjoining or near the sea.
forest	A large area covered chiefly with trees and undergrowth.
town	A built-up area with a name, defined boundaries, and local government, that is larger than a village and generally smaller than a city.
mountain	A large natural elevation of the earth's surface rising abruptly from the surrounding level; a large steep hill.
river	A large natural stream of water flowing in a channel to the sea, a lake, or another river.
city	A large town.

What will I know by the end of the unit?

- We will be able to use simple map and observational skills.
- We will be able to use key vocabulary.
- We will use simple direction and location language like, far, near, left and right to describe locations and routes on a map.
- We will be reading these books....



....and lots more!